

## PMV P5 & EP5 POSITIONERS

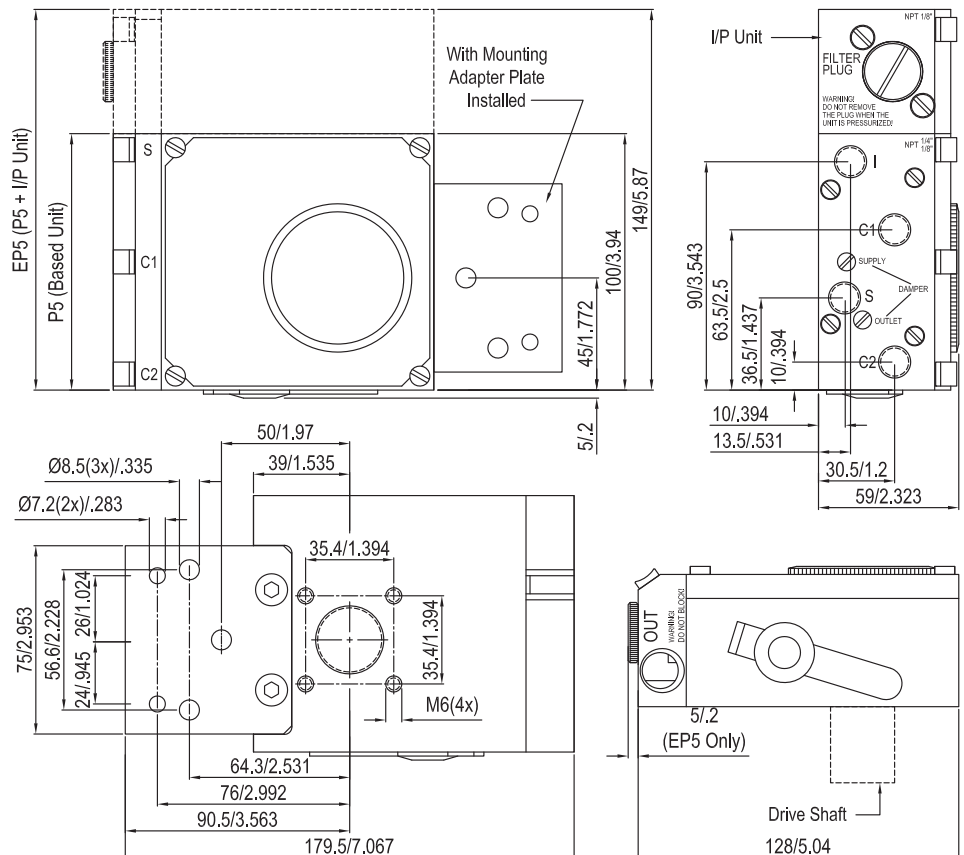
The foundation of the PMV positioner system is the P5 pneumatic positioner. Performance of this unit is enhanced with a special high gain, high capacity spool valve assembly providing quick and accurate actuator and valve response. For single and double-acting applications, the modular design allows for the simple addition of an I/P (4-20mA input) converter (such as the EP5) and/or a feedback unit with a variety of feedback options.

FNW supplies pneumatic and electro-pneumatic positioners for both quarter-turn and linear actuators. Contact FNW for optional positioner configurations such as low temp (-40°F/-40°C), reverse acting, feedback units, and characterized cams including split range, equal percent, and square root degree combinations.



### Features:

- Sturdy Construction
- Force Balance Design
- High Gain Pilot Valve
- Bright Position Indicator
- Stainless Steel Cam
- Tapped Exhaust Port
- Modular Design
- Simple Calibration
- External Zero Adjustment
- Built-in Gauge Ports
- Sealed Cover
- Replaceable Drive Spindles



## PMV P5 & EP5 POSITIONERS

### Technical Specifications

SPECIFICATION	P5	EP5
Input Signal	3-15 PSI (20-1000 kPa)	4-20mA
Linearity	≤ 0.5%*	≤ 1.0%*
Hysteresis	≤ 0.5%*	≤ 0.75%*
Repeatability	≤ 0.5%*	
Gain Factor at 87 PSI (600 kPa)	Min. 1000 kPa/kPa	
	Max. 66%/100 ISA S75.13-1989	
Max. Air Consumption		
@ 29 PSI (0.2 MPa)	0.19 SCFM (5.4 nl/min)	0.22 SCFM (6.1 nl/min)
@ 58 PSI (0.4 MPa)	0.43 SCFM (12.3 nl/min)	0.48 SCFM (13.6 nl/min)
@ 87 PSI (0.6 MPa)	0.71 SCFM (20 nl/min)	0.78 SCFM (22.0 nl/min)
@ 116 PSI (0.8 MPa)	0.98 SCFM (27.8 nl/min)	1.08 SCFM (30.5 nl/min)
@ 145 PSI (1.0 MPa)	1.26 SCFM (35.7 nl/min)	1.38 SCFM (39.0 nl/min)
Min. Air Consumption		
@ 29 PSI (0.2 MPa)	6.9 SCFM (200 nl/min)	
@ 58 PSI (0.4 MPa)	12.8 SCFM (370 nl/min)	
@ 87 PSI (0.6 MPa)	18.8 SCFM (540 nl/min)	
@ 116 PSI (0.8 MPa)	24.7 SCFM (710 nl/min)	
@ 145 PSI (1.0 MPa)	30.6 SCFM (880 nl/min)	
Max. Supply Pressure	150 PSI (1.0 MPa)	
Temperature Range	-4°F to +185°F (-20°C to +85°C)	
Connector Threads	1/4" NPT	
Gauge Threads	1/8" NPT	
Weight	2.4 Lbs. (1.1 kg)	3.4 Lbs. (1.5 kg)
Housing	Die Cast Aluminum	
Surface Treatment	ED Epoxy Paint (Black)	
Fasteners	A2/A4 Stainless	
Ingress Protection	IP66 / NEMA4	
Deadband	-	≤ 0.15%
Min. Supply Pressure	-	21 PSI (0.14 MPa)
Conduit Entry	-	1/2" NPT pr PG 13.5 (M20)
Terminals	-	2.5mm (AVG 14) Screw Terminals
Input Impedance	-	170-260 Ohms at 71°F (20°C)
RFI Influence	-	Not Measurable
Capacitance	-	Negligible
Supply Pressure Effect	-	0.5%/15 PSI (0.1 MPa)
Cenelec Intrinsically Safe	-	Eex ia IIC T4-T6
FM Intrinsically Safe	-	Div 1, Class 1, Group ABCD
CSA Intrinsically Safe	-	Div 1, Class 1, Group ABCD

\* Percent of full scale

DOC: FNWP5-EP505 Ver. 2/2012

© 2012 - FNW. All rights reserved.

The FNW logo is a trademark of Ferguson Enterprises, Inc., PL Sourcing, PO Box 2778, Newport News, VA 23609

The contents of this publication are presented for information purposes only, and while effort has been made to ensure their accuracy, they are not to be construed as warranties or guarantees, expressed or implied, regarding the products or services described herein or their use or applicability. All sales are governed by our terms and conditions, which are available on request. We reserve the right to modify or improve the designs or specifications of our products at any time without notice. Always verify that you have the most recent product specifications or other documentation prior to the installation of these products.